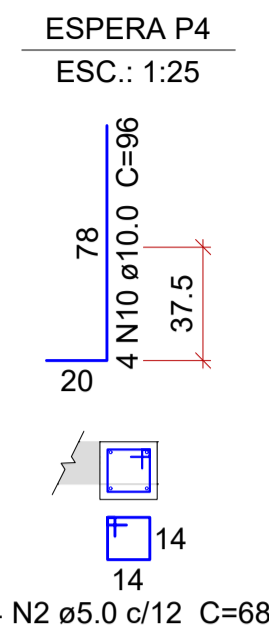
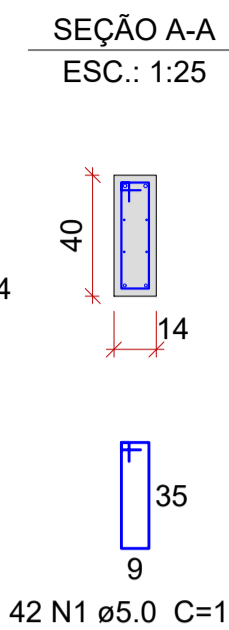
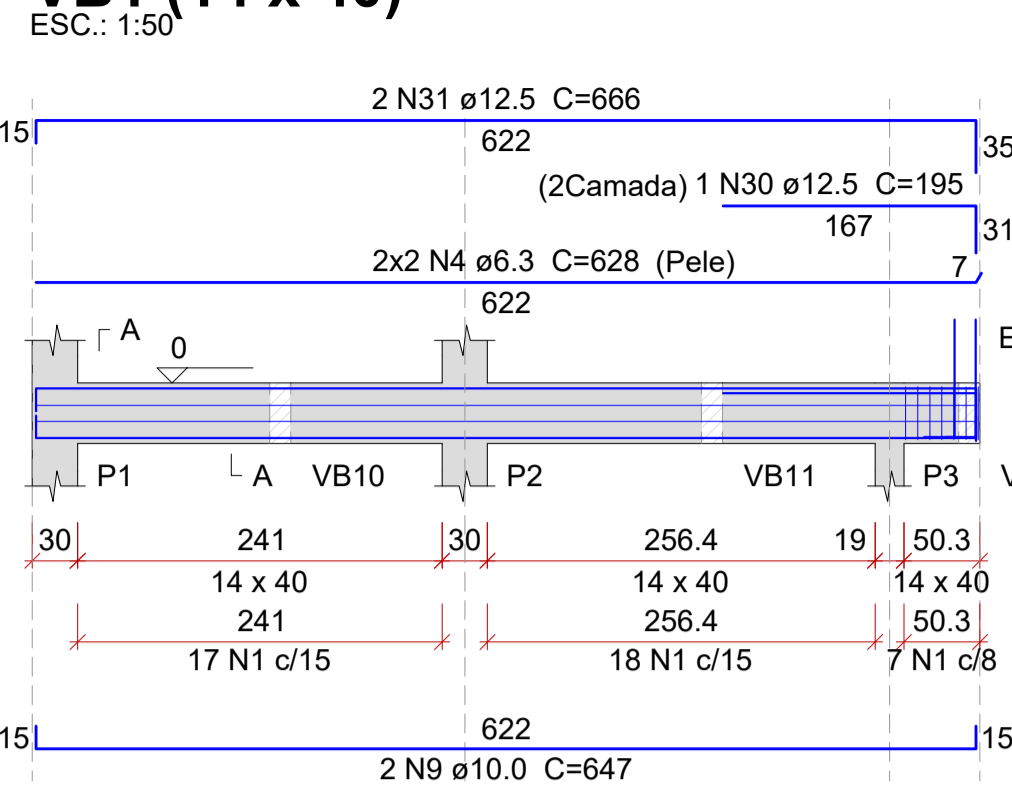
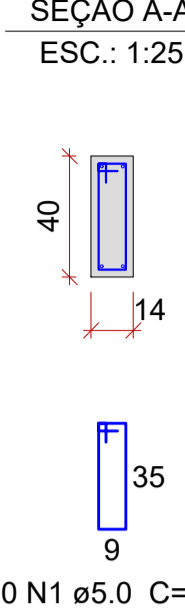
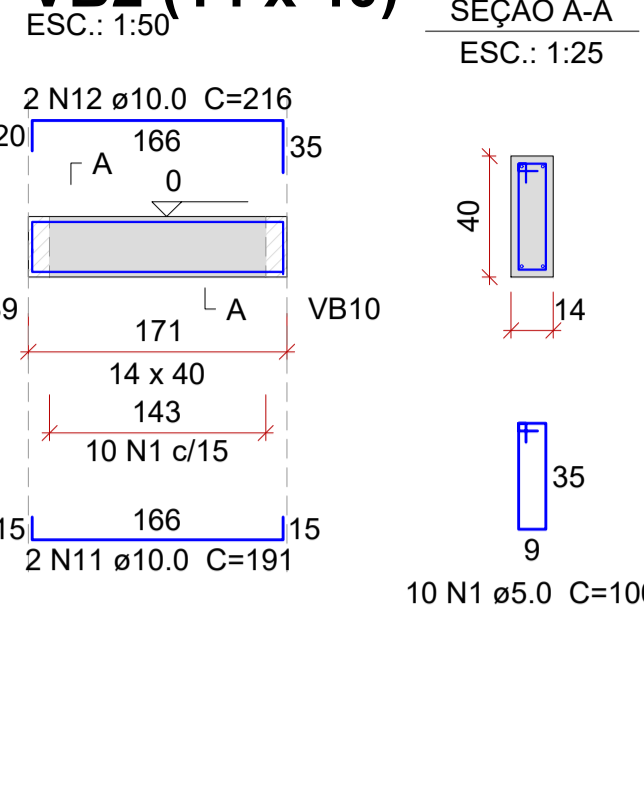


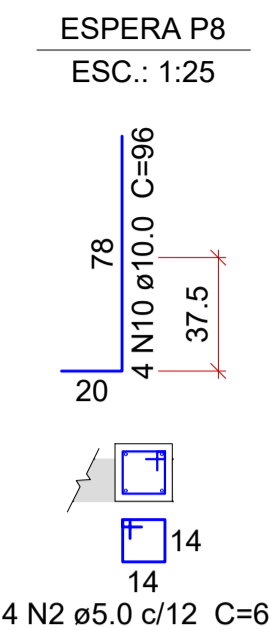
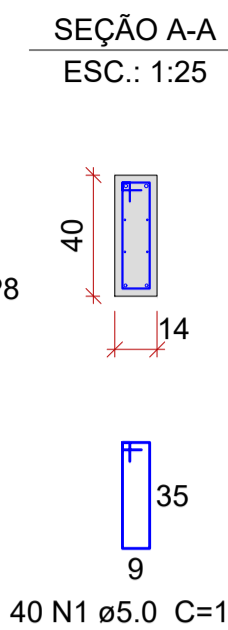
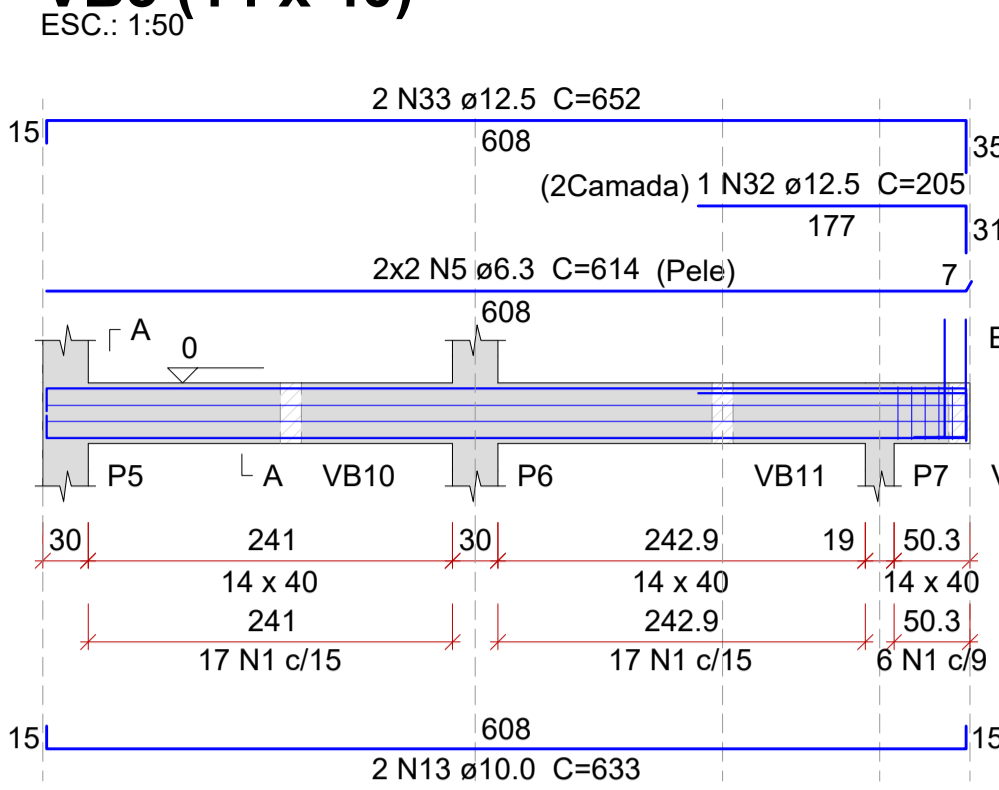
VB1 (14 x 40)



VB2 (14 x 40)



VB3 (14 x 40)



Relação do aço

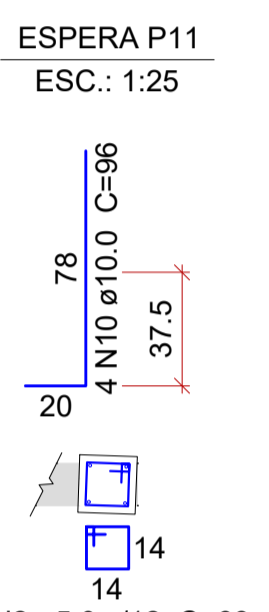
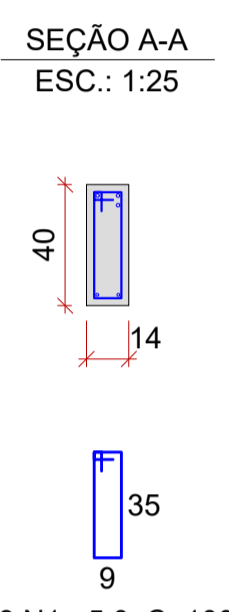
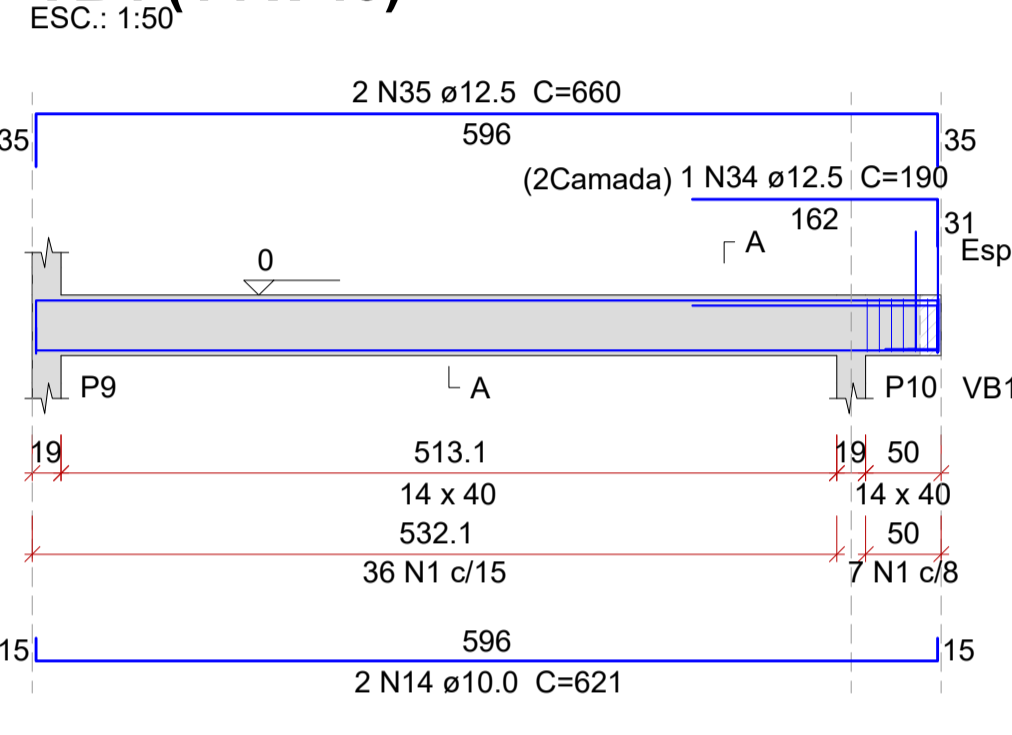
AÇO	N	DIAM (mm)	QUANT	C.UNIT (cm)	C.TOTAL (cm)
CA60	1	5.0	420	100	42000
	2	5.0	24	68	1632
	3	5.0	8	80	640
CA50	4	6.3	4	628	2512
	5	6.3	4	614	2456
	6	6.3	4	236	944
	7	6.3	8	70	560
	8	6.3	4	97	388
	9	10.0	2	647	1294
	10	10.0	32	96	3072
	11	10.0	2	191	382
	12	10.0	2	216	432
	13	10.0	2	633	1266
	14	10.0	2	621	1242
	15	10.0	2	910	1820
	16	10.0	2	241	482
	17	10.0	2	898	1796
	18	10.0	2	206	412
	19	10.0	2	216	432
	20	10.0	2	1029	2058
	21	10.0	2	388	776
	22	10.0	2	1198	2396
	23	10.0	2	263	526
	24	10.0	4	401	1604
	25	10.0	4	411	1644
	26	10.0	2	1135	2270
	27	10.0	2	494	988
	28	10.0	2	1199	2398
CA50	29	10.0	2	498	996
	30	12.5	1	195	195
	31	12.5	2	666	1332
	32	12.5	1	205	205
	33	12.5	2	652	1304
	34	12.5	1	190	190
	35	12.5	2	660	1320
	36	12.5	2	180	360
	37	12.5	2	949	1898
	38	12.5	2	280	560
	39	12.5	1	175	175
	40	12.5	2	937	1874
CA60	41	5.0	103	110	11330

Resumo do aço

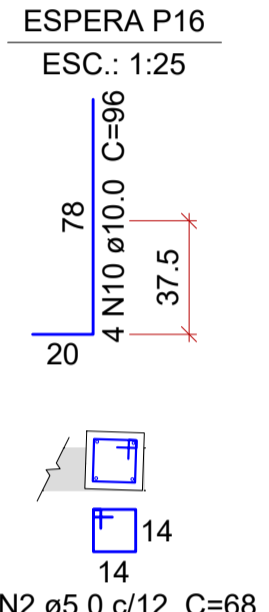
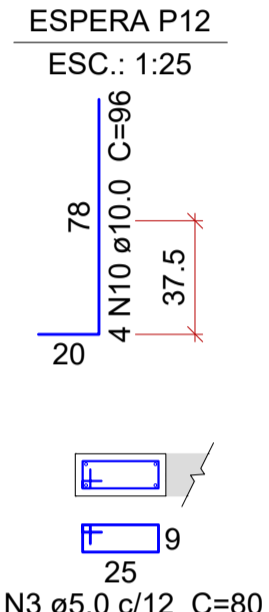
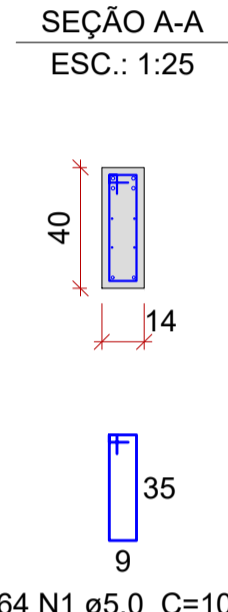
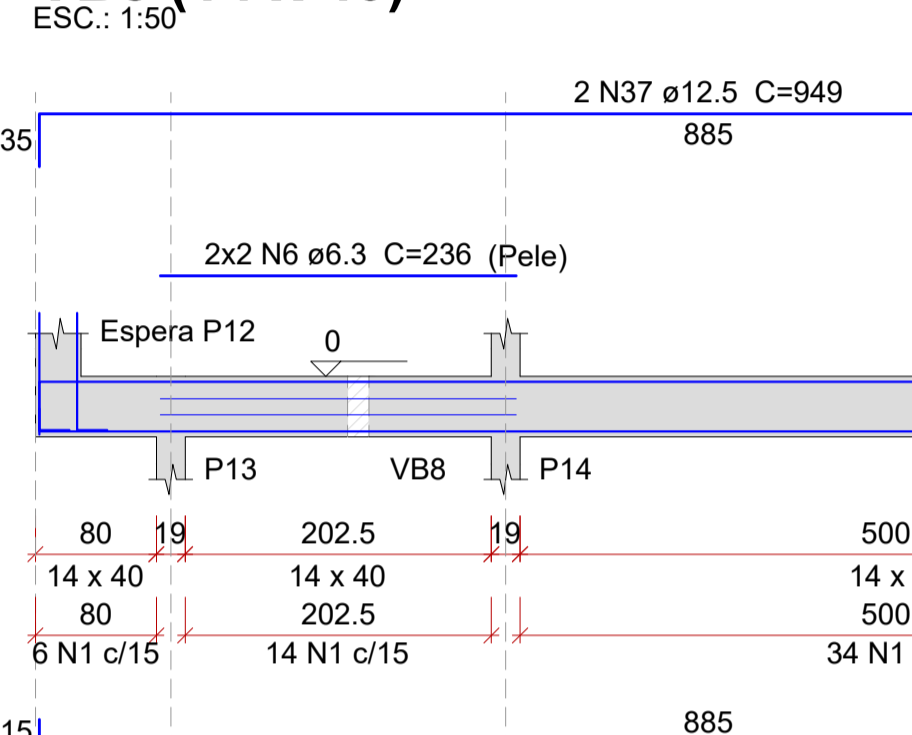
AÇO	DIAM (mm)	C.TOTAL (m)	QUANT (Barras)	PESO (kg)
CA50	6.3	68.6	6	16.8
	10.0	282.9	24	174.4
	12.5	94.2	8	90.7
	5.0	556	-	85.7
PESO TOTAL (kg)				
CA50				281.9
CA60				85.7

Volume de concreto (C-25) = 4.43 m³
Área de forma = 74.36 m²

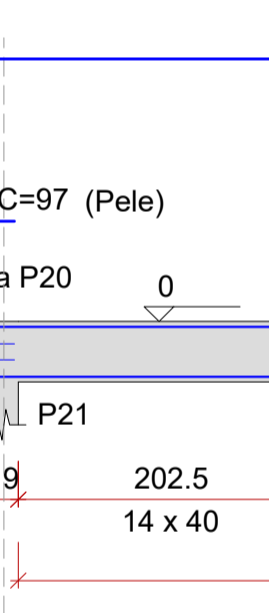
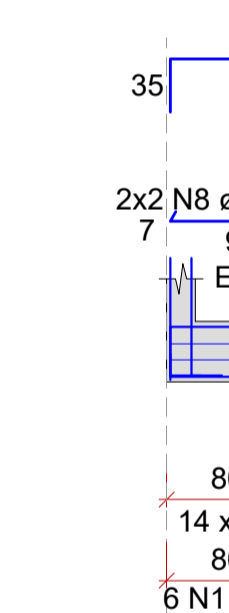
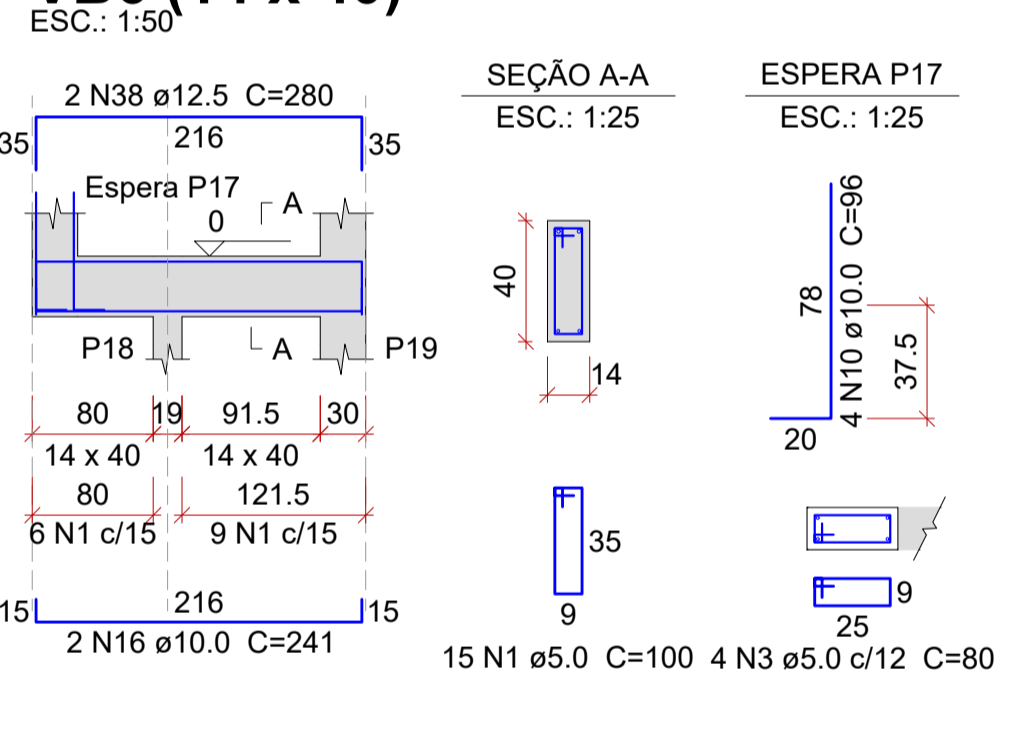
VB4 (14 x 40)



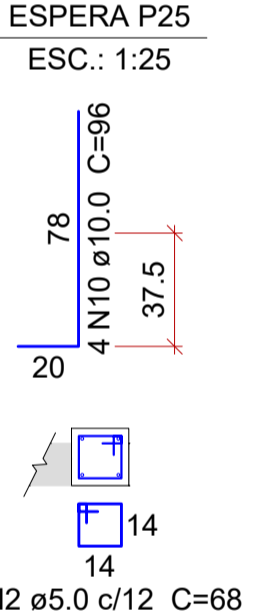
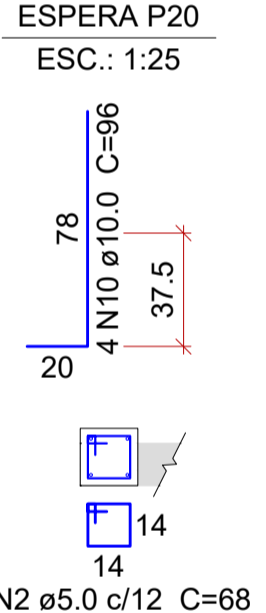
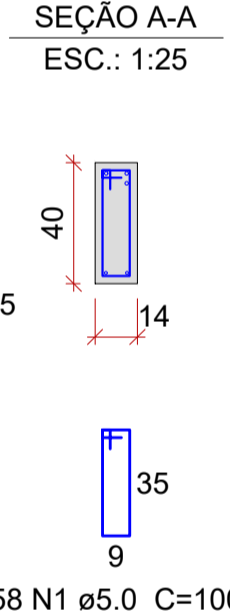
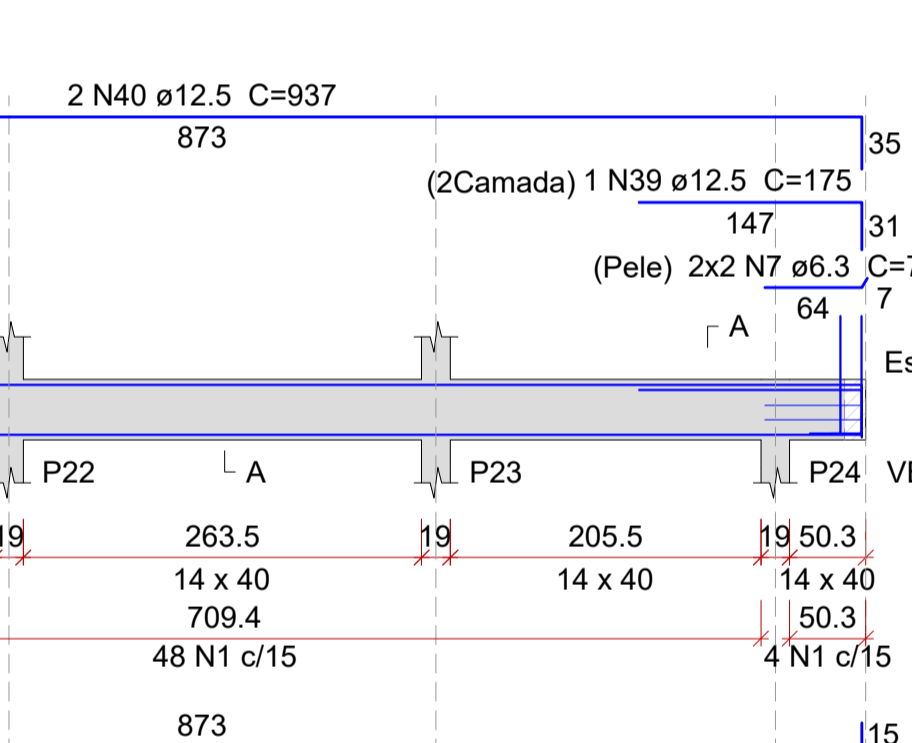
VB5 (14 x 40)



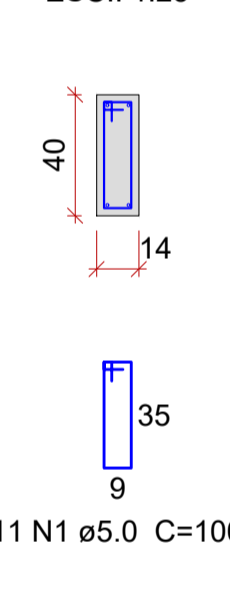
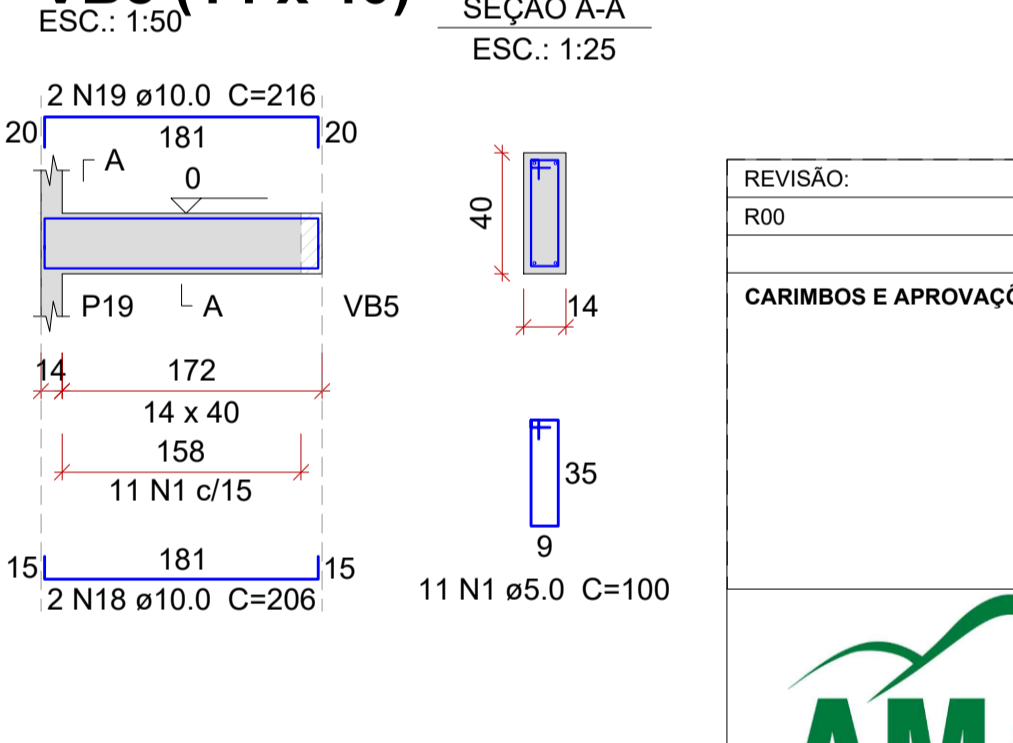
VB6 (14 x 40)



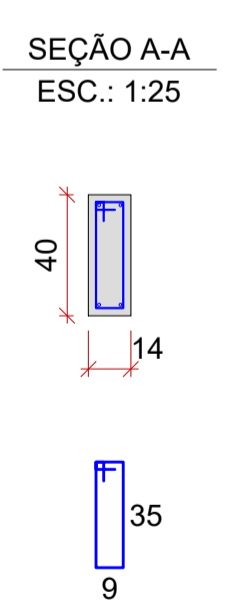
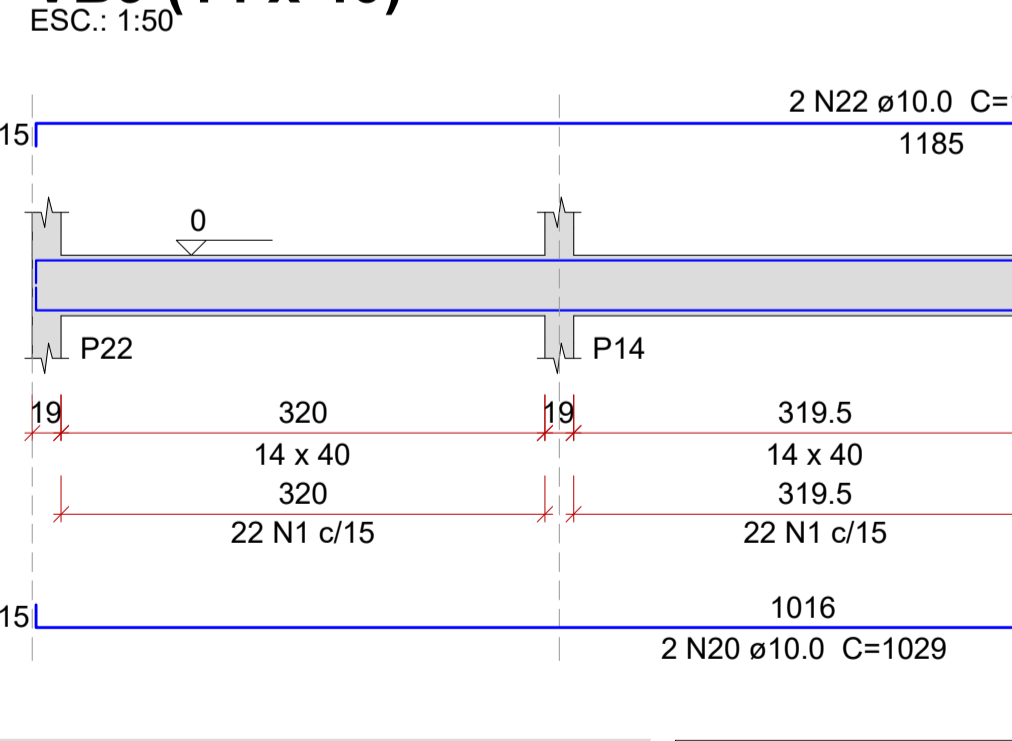
VB7 (14 x 40)



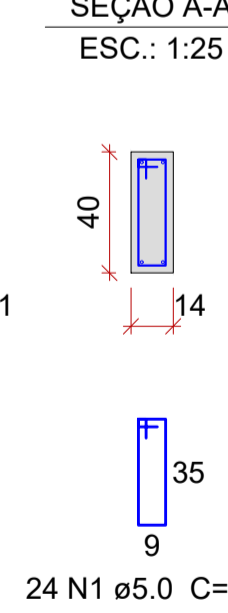
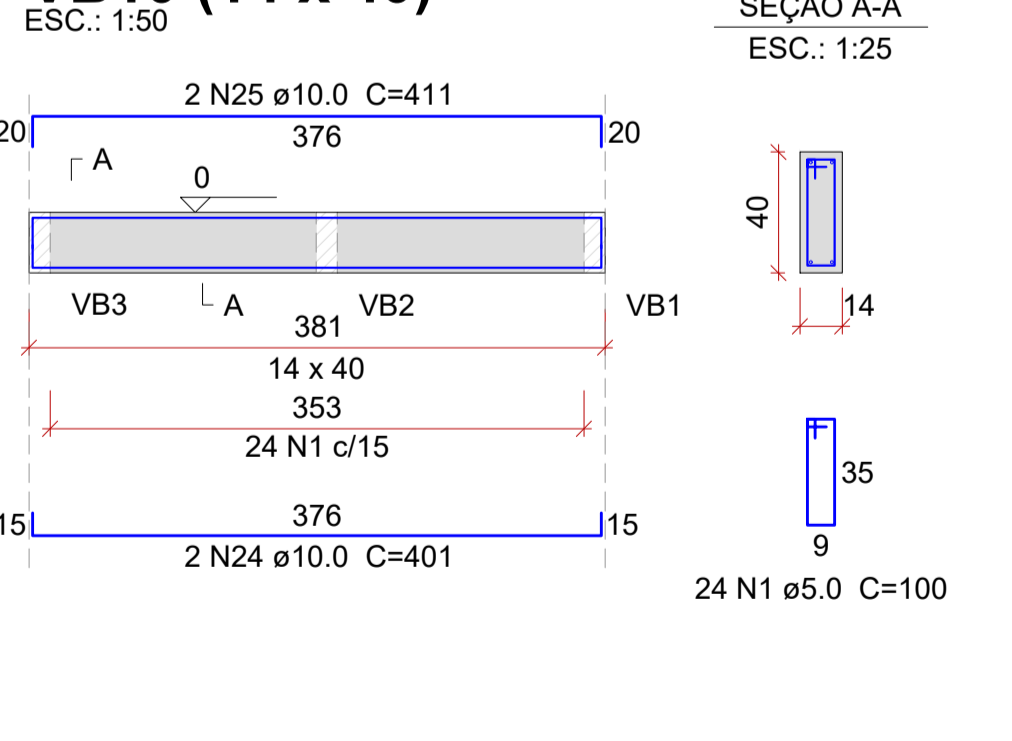
VB8 (14 x 40)



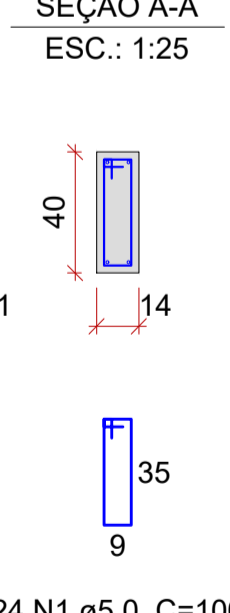
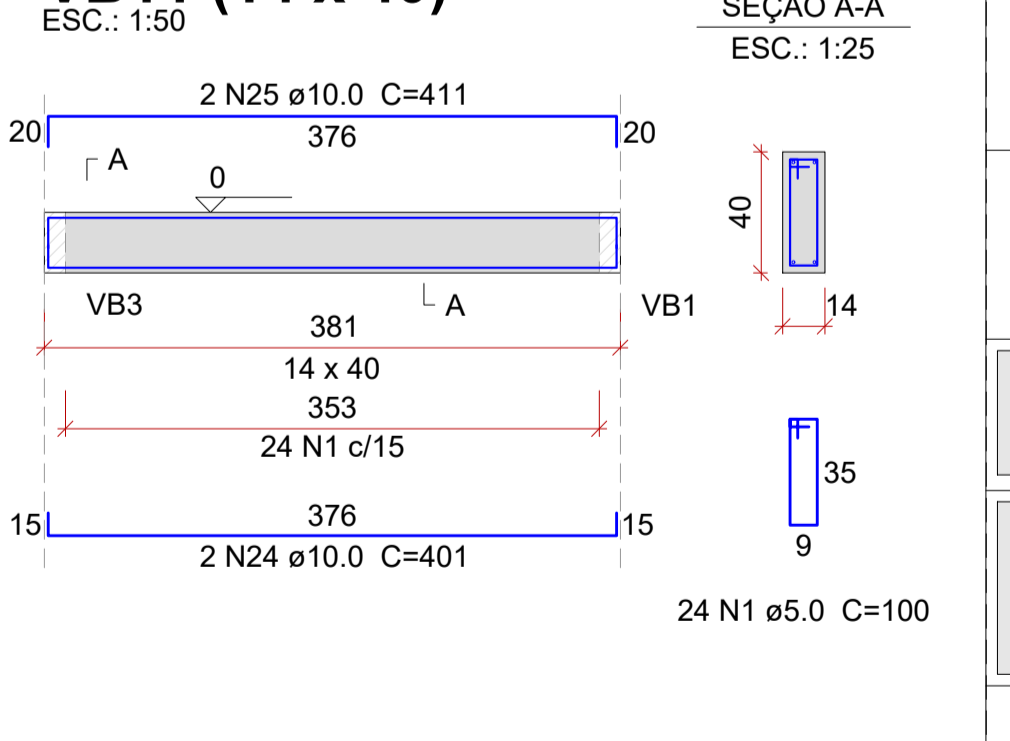
VB9 (14 x 40)



VB10 (14 x 40)



VB11 (14 x 40)



COBRIMENTOS:

Elemento	Cobrimento (cm)
LAJE	2.0
VIGAS	2.5
PILARES	2.5
FUNDAÇÃO	5.0

INFORMAÇÕES DE CAA, TRAÇO DE CONCRETO E CARGAS CONSIDERADAS PARA CÁLCULO, CONSTAM NO MEMORIAL DESCRITIVO.

VIGAS BALDRAME

ESCALA INDICADA

LEITURA DAS ARMADURAS

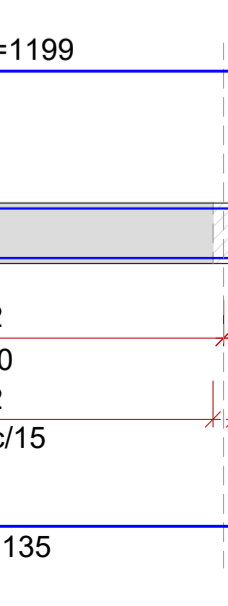
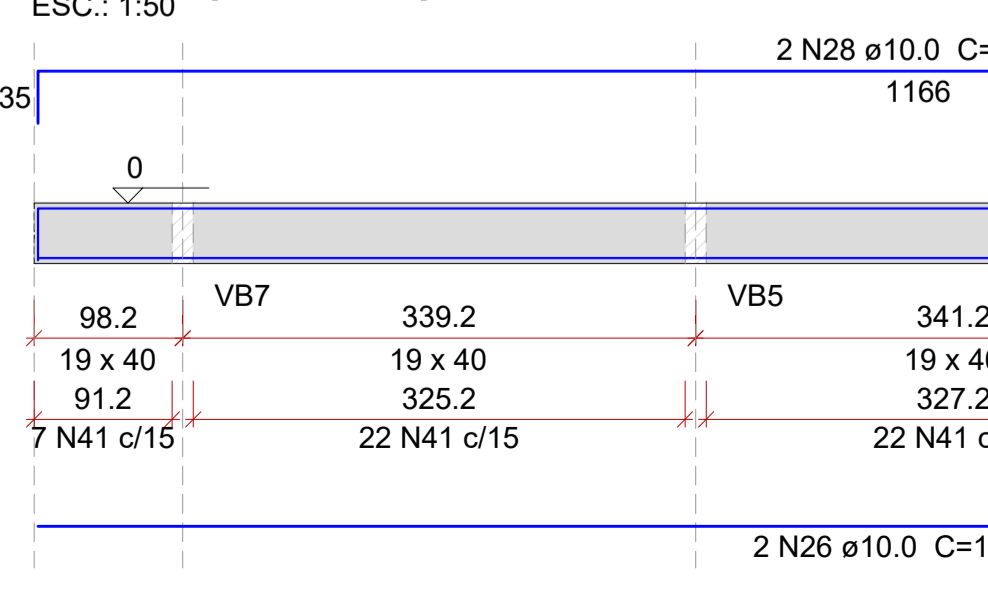
SEM ESCALA - COTAS EM CENTÍMETROS

Tabela de Conversões e Pinos de Dobramento

AÇO	DIAM (mm)	DIAM (pol)	PINO (D) (cm)
CA60	5.0	3/16	3"
CA50	6.3	1/4	3
CA50	8.0	5/16	4
CA50	10.0	3/8	5
CA50	12.5	1/2	6.5
CA50	16.0	5/8	8

Quantidades de Barras = 2 Barras
Número da Barra no Detalhamento = N3
Bitola = ø10.0mm ou 3/8"
Espaçamento entre as Barras = 15cm
Comprimento Total da Barra = 655cm
Dobra na Extremidade = 30cm
Comprimento Horizontal = 600cm

VB12 (14 x 40)



REVISÃO: R00 DATA: 03/2022 DESCRIÇÃO: EMISSÃO INICIAL

CARIMBOS E APROVAÇÕES:

(47) 3531-4242
amavi@amavi.org.br
amavi.org.br
f @amavi_altovalle
Rua XV de Novembro, 737
Centro, Rio do Sul/SC
89160-015

PROPRIETÁRIO / CONTRATANTE: ASSINATURA:

PREFEITURA MUNICIPAL DE IMBUIA
CNPJ: 83.102.632/0001-93

RESPONSÁVEL TÉCNICO PROJETO: ASSINATURA:

EDUARDO FRANCISCO SILVA DE FIGUEIREDO
ENGENHEIRO CIVIL - CREA: 187051-8-SC

PROJETO:

ESTRUTURA DE CONCRETO ARMADO

OBRA:

REFORMA E AMPLIAÇÃO DO CENTRO MUNICIPAL DE EDUCAÇÃO INFANTIL BRANCA DE NEVE

LOGRADOURO: RODOVIA SC 281

MUNICÍPIO: IMBUIA

ÁREA A AMPLIAR: 95,22 m²

BAIRRO: SAMAMBAIA N°: S/N

UF: SC CEP: 88440-000

CONTEÚDO:

VIGAS BALDRAME

ESCALA: INDICADA

DATA: JUNHO/2022

CÓDIGO AMAVI: 2816

DESENHISTA: EDUARDO FIGUEIREDO

EST03/04

TODOS OS DIREITOS RESERVADOS. PROIBIDA A REPRODUÇÃO PARCIAL OU TOTAL. DESENHO VÁLIDO SOMENTE ASSINADO PELO RESPONSÁVEL DO PROJETO.